



Catalogue of product

K-KART spol. s r.o.
Filakovská cesta č. 41
984 01 Lučenec
Slovak Republic
Tel.: 00421 47 433 00 83
Cell phone: 00421 905 959 842
web: www.kkart.sk
e-mail: kkart@kkart.sk

1. SPROCKET FOR A100



KR0102

CODE DESCRIPTION

| CODE | DESCRIPTION |
|--------|---|
| | Sprocket for A100 type 219 „classic“ - ERGAL |
| KR0101 | number of teeth: 62 – 69 |
| KR0102 | number of teeth: 70 - 72 |
| KR0102 | number of teeth: 73 - 74 |
| KR0103 | number of teeth: 75 - 77 |
| KR0104 | number of teeth: 78 - 81 |
| KR0104 | number of teeth: 82 - 83 |
| KR0105 | number of teeth: 84 - 86 |
| KR0105 | number of teeth: 87 - 89 |
| KR0106 | number of teeth: 90 - 93 |
| KR0107 | number of teeth: 94 - 97 |



KR0115

| | |
|--------|--|
| | Sprocket for A100 type 219 „superlight“ - ERGAL |
| KR0111 | number of teeth: 62 – 69 |
| KR0112 | number of teeth: 70 – 72 |
| KR0112 | number of teeth: 73 – 74 |
| KR0113 | number of teeth: 75 – 77 |
| KR0114 | number of teeth: 78 – 81 |
| KR0114 | number of teeth: 82 – 83 |
| KR0115 | number of teeth: 84 – 86 |
| KR0115 | number of teeth: 87 – 89 |
| KR0116 | number of teeth: 90 – 93 |
| KR0117 | number of teeth: 94 – 97 |
| | Sprocket for A100 type 215 "classic" - ERGAL |
| KR215C | number of teeth: 65-70 - small Øsize for brake disc holder |
| KR215C | number of teeth: 71-73 |
| KR215C | number of teeth: 74-76 |
| KR215C | number of teeth: 77-80 |
| KR215C | number of teeth: 81-82 |
| KR215C | number of teeth: 83-85 |
| KR215C | number of teeth: 86-89 |
| KR215C | number of teeth: 90-92 |
| KR215C | number of teeth: 93-95 |
| KR215C | number of teeth: 96-100 |
| KR215C | number of teeth: 101-103 |

Sprocket for A100 type 215 "Superlight" - **ERGAL**

| | |
|-------|--------------------------|
| KR215 | number of teeth: 74-76 |
| KR215 | number of teeth: 77-80 |
| KR215 | number of teeth: 81-82 |
| KR215 | number of teeth: 83-85 |
| KR215 | number of teeth: 86-89 |
| KR215 | number of teeth: 90-92 |
| KR215 | number of teeth: 93-95 |
| KR215 | number of teeth: 96-100 |
| KR215 | number of teeth: 101-103 |

By ordering the color of the product provides extra point past the product code.

(for example: KR0101GD-gold

Colors: gold-GD standard

(usually in stock, except parts which are made only in black or Gray color)

black -BK standard (usually in stock, except A 100)

red-RD custom-made

grey-GR custom-made

magnesium gold-MG custom-made

blue-BU - custom-made

Some items are only in black color

(Chain stretcher, exhaust support, steering column support, pedals....)

Sprockets C125 ERGAL are only in grey color

2. SPROCKET FOR C125



KR027326AGR

| CODE | DESCRIPTION |
|-----------|--|
| | Sprocket for C125 type 428 – ergal alloy, diam. 50 mm Sprockets are without gap and Grey color - (keyways 8 mm) |
| KR0271AGR | number of teeth: 20,21,22,23 |
| KR0272AGR | number of teeth: 24,25 |
| KR0273AGR | number of teeth: 26,27 |
| KR0273AGR | number of teeth: 28 |
| KR0274AGR | number of teeth: 29,30 |



KR0253

| | |
|--------|--|
| | Sprocket for C125 type 428 – steel, diam. 30 mm (keyways 6 and 8 mm) |
| KR0201 | number of teeth: 21,22,23 |
| KR0202 | number of teeth: 24,25 |
| KR0203 | number of teeth: 26,27,28 |
| KR0204 | number of teeth: 29,30 |
| KR0205 | number of teeth: 31,32 |
| KR0206 | number of teeth: 33 |
| KR0207 | number of teeth: 34, 35 |
| KR0208 | number of teeth: 36 |

| | |
|--------|--|
| | Sprocket for C125 type 428 – steel, diam. 40 mm (keyways 8 mm) |
| KR0221 | number of teeth: 21,22,23 |
| KR0222 | number of teeth: 24,25 |
| KR0223 | number of teeth: 26,27,28 |
| KR0224 | number of teeth: 29,30 |
| KR0224 | number of teeth: 31,32 |
| KR0224 | number of teeth: 35 |

| | |
|--------|--|
| | Sprocket for C125 type 428 – steel, diam. 50 mm (keyways 8 mm) |
| KR0251 | number of teeth: 21,22,23 |
| KR0252 | number of teeth 24,25 |
| KR0253 | number of teeth: 26,27,28 |
| KR0254 | number of teeth: 29,30 |

| | |
|----------|---|
| KR025436 | All Iron sprockets are in gold zinc color. Sprocket C125 - 50-8-36teeth - Iron |
|----------|---|

3. ENGINE SPROCKETS AND SPROCKETS FOR HONDA GX



KR0281

| CODE | DESCRIPTION |
|--------|--|
| | Sprockets for HONDA GX |
| KR0301 | diam. 22 mm, l= 50,5 mm, num. of teeth: 12 |
| KR0302 | diam. 22 mm, l= 50,5 mm, num. of teeth: 13 |
| KR0303 | diam. 22 mm, l= 50,5 mm, num. of teeth: 14 |
| KR0304 | diam. 22 mm, l= 50,5 mm, num. of teeth: 15 |
| KR0305 | diam. 22 mm, l= 50,5 mm, num. of teeth: 16 |



splitted KR0343 sprocked

| CODE | DESCRIPTION |
|--------|--|
| | Sprockets for HONDA GX 390 |
| KR0340 | Sprocket Honda GX 390 12,7 - 11th (hardened) |
| KR0341 | Sprocket Honda GX 390 12,7 - 12th (hardened) |
| KR0342 | Sprocket Honda GX 390 12,7 - 13th (hardened) |
| KR0343 | Sprocket Honda GX 390 12,7 - 14th (hardened) |
| KR0344 | Sprocket Honda GX 390 12,7 - 15th (hardened) |



KR0325

| | |
|--------|--|
| KR0319 | Sprocket Rental IRON - 43 teeth - splitted |
| KR0320 | Sprocket Rental IRON - 44 teeth - splitted |
| KR0321 | Sprocket Rental IRON - 45 teeth - splitted |
| KR0322 | Sprocket Rental IRON - 46 teeth - splitted |
| KR0323 | Sprocket Rental IRON - 47 teeth - splitted |
| KR0324 | Sprocket Rental IRON - 48 teeth - splitted |
| KR0325 | Sprocket Rental IRON - 49 teeth - splitted |

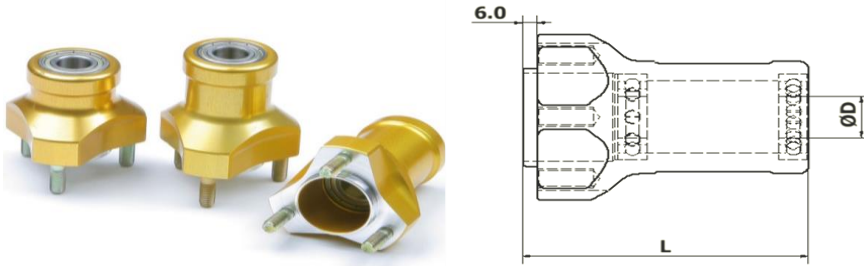


KR033042

| | |
|----------|---|
| KR033039 | Al sprocket Rental - 39 teeth - splitted (Ergal-7075) |
| KR033040 | Al sprocket Rental - 40 teeth - splitted (Ergal-7075) |
| KR033041 | Al sprocket Rental - 41 teeth - splitted (Ergal-7075) |
| KR033042 | Al sprocket Rental - 42 teeth - splitted (Ergal-7075) |
| KR033043 | Al sprocket Rental - 43 teeth - splitted (Ergal-7075) |
| KR033044 | Al sprocket Rental - 44 teeth - splitted (Ergal-7075) |
| KR033045 | Al sprocket Rental - 45 teeth - splitted (Ergal-7075) |

We producing also hardened version as special order

4. FRONT AND REAR HUBS FROM ALUMINIUM



KN0401, KN0402, KN0403

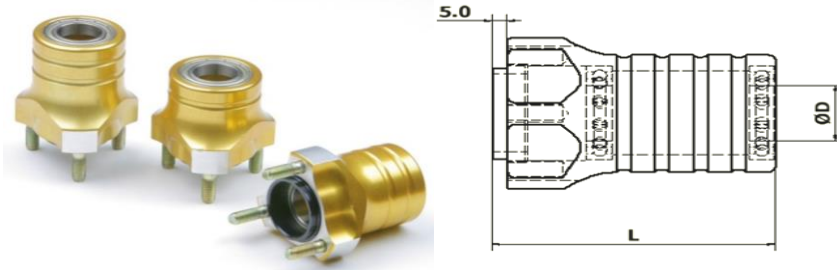
CODE DESCRIPTION

Al front hub Ø17 - 40/58 mm with bearings

KN0401 l= 61 mm, 2 x bearings 6003 ZZ
 KN0402 l= 76 mm, 2 x bearings 6003 ZZ
 KN0403 l= 96 mm, 2 x bearings 6003 ZZ

Al front hub Ø17 - 55/67 mm with bearings

KN0411 l= 76 mm, 2 x bearings 6003 ZZ (CRG)
 KN0412 l= 96 mm, 2 x bearings 6003 ZZ (CRG)



KN0462, KN0463

Al front hub for Ø25 - 40/58 mm with bearings

KN 0461 l=61 mm, 2 x bearings 61905 ZZ
 KN 0462 l=76 mm, 2 x bearings 61905 ZZ
 KN 0463 l=96 mm, 2 x bearings 61905 ZZ

Al front hub for Ø25 - 55/67 mm with bearings

KN 0471 l=76 mm, 2 x bearings 61905 ZZ (CRG, Maranello)
 KN 0472 l=82 mm, 2 x bearings 61905 ZZ (CRG, Maranello)
 KN 0473 l=96 mm, 2 x bearings 61905 ZZ (CRG, Maranello)

Al rear hub diam. 25 mm
 KN0421 25-6-38 mm
 KN0422 25-6-67 mm
 KN0423 25-6-98 mm



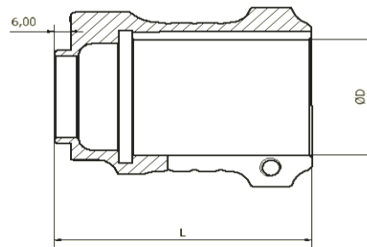
KN0429

Al rear hub diam. 30 mm
 KN0430 30-6+8-31 mm
 KN0429 30-6+8-38 mm
 KN0431 30-6+8-67 mm
 KN0433 30-6+8-76 mm
 KN0435 30-6+8-98 mm
 KN0437 30-6+8-120 mm

Al rear hub diam. 40 mm
 KN0441 40-8-66 mm
 KN0442 40-8-76 mm
 KN0443 40-8-98 mm
 KN0444 40-8-120 mm
 KN0445 40-8-67 mm



KN0453



Al rear hub diam. 50 mm
 KN0451 50-8-78 mm
 KN0452 50-8-88 mm
 KN0453 50-8-98 mm
 KN0454 50-8-120 mm

5. FRONT AND REAR HUBS FROM MAGNESIUM



| CODE | DESCRIPTION |
|--------|--|
| | Mg front hub Ø17 - 40/58 mm with bearings |
| KN0501 | l = 61 mm, 2 x bearings 6003 ZZ |
| KN0502 | l = 76 mm, 2 x bearings 6003 ZZ |
| KN0503 | l = 96 mm, 2 x bearings 6003 ZZ |
| | Mg front hub Ø17 - 55/67 mm with bearings |
| KN0504 | l = 76 mm, 2 x bearings 6003 ZZ (CRG, Maranello) |
| KN0505 | l = 96 mm, 2 x bearings 6003 ZZ (CRG, Maranello) |



KN05061

| | |
|---------|--|
| | Mg front hub Ø 40 55/67 mm (CRG, Maranello) |
| KN05061 | Mg front hub 40-8 55/67, l=76mm |



KN0507,KN0509

KN0510,KN0511

| | |
|--------|--|
| | Mg front hub Ø25 - 40/58 mm with bearings |
| KN0507 | l=61 mm, 2 x bearings 61905 ZZ |
| KN0508 | l=76 mm, 2 x bearings 61905 ZZ |
| KN0509 | l=96 mm, 2 x bearings 61905 ZZ |
| | Mg front hub Ø25 - 55/67 mm with bearings |
| KN0510 | l=76 mm, 2 x bearings 61905 ZZ (CRG, Maranello) |
| KN0511 | l=82 mm, 2 x bearings 61905 ZZ (CRG, Maranello) |
| KN0512 | l=96 mm, 2 x bearings 61905 ZZ (CRG, Maranello) |

| | |
|---------|---------------------|
| 600322 | Bearing 600322 |
| 6190522 | Bearing 6190522 |
| SM8x22 | Stud for hubs M8x22 |

KN0514



KN0515



Mg rear hub diam. 30 mm

KN0514

30-6+8-31 mm

KN0515

30-6+8-40 mm

KN0516

30-6+8-55 mm - until stock are sold out

KN0517

30-6+8-65 mm - until stock are sold out

KN0518

30-6+8-75 mm - until stock are sold out

KN0520



KN0522



Mg rear hub diam. 40 mm

KN0520

40-8-76 mm

KN0521

40-8-98 mm

KN0522

40-8-120 mm

KN0527



KN0528



Mg rear hub diam. 50 mm-model 2009

KN0525

50-8-78 mm

KN0526

50-8-88 mm

KN0527

50-8-98 mm

KN0528

50-8-120 mm

KN0531



KN0533



Mg rear hub diam. 50 mm-model US

KN0529

50-8-78 mm

KN0530

50-8-88 mm

KN0531

50-8-98 mm

KN0532

50-8-120 mm

KN0533

50-8-155 mm



KNKR05



KNKR02



KNKR04

Mg hub type KR (KART REPUBLIC)

KNKR05

Front hub Ø25-73/69/mm

KNKR01

Front hub Ø25-94/89/mm

KNKR02

Rear hub Ø40-75/72/mm

KNKR03

Rear hub Ø40-95/90/mm

KNKR04

Rear hub Ø50-98/95/mm

6. SPROCKET AND BRAKE DISK HOLDERS FROM ALUMINIUM



KU0606

CODE DESCRIPTION

Al brake discs holder

(diameters for fixation of disk brake: 100/114 mm)

KU0601 25-6 mm

KU0603 30-6+8 mm

KU0605 40-8 mm

KU0606 50-8 mm



KU0615

Al sprocket holders

KU0611 25-6 mm

KU0613 30-6+8 mm

KU0615 40-8 mm

KU0616 50-8 mm

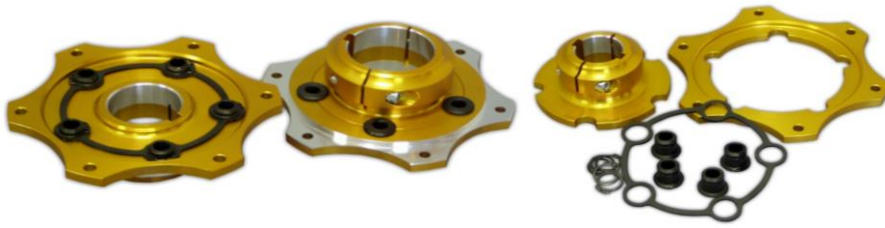


KU0618

Al sprocket holder with double fixation

KU0617 40-8 mm

KU0618 50-8 mm



KU0635

KU0636 - KU0640

CODE DESCRIPTION

Al floating sprocket holder
(for „classic“ sprockets)

KU0631 25-6 mm
 KU0632 30-6+8 mm
 KU0634 40-8 mm
 KU0635 50-8 mm

Accessories for floating sprocket holder

KU06361 Internal part Ø25
 KU06362 Internal part Ø30
 KU06363 Internal part Ø40
 KU06364 Internal part Ø50
 KU0637 External part
 KU0638 Special washer
 KU0639 Stud
 SEG14BL Insurance

7. SPROCKET AND DISK BRAKE HOLDERS FROM MAGNESIUM



KU0701

CODE DESCRIPTION

Mg disk brake holder

(diameters for fixation of disk brake: 100/114 mm)

KU0701 40-8 mm

KU0702 50-8 mm



KU0704

Mg sprocket holder

KU0710 30-6+8 mm

KU0703 40-8 mm

KU0704 50-8 mm



KU0708

Mg sprocket holder double fixation

KU0707 30-6+8 mm

KU0709 40-8 mm

KU0708 50-8 mm

8. BRAKE DISCS

KB0809



CODE

DESCRIPTION

| CODE | DESCRIPTION |
|--------|-----------------------------------|
| | Ventilated rear disk brake |
| KB0808 | 100-200-12 mm, with groove |
| KB0809 | 100-204-12 mm, with groove |
| KB0810 | 100-208-12 mm, with groove |
| KB0815 | 100-210-12 mm, with groove |

KB0811



| | |
|--------|------------------------|
| KB0811 | 100-200-12 mm, drilled |
| KB0812 | 100-204-12 mm, drilled |
| KB0813 | 100-208-12 mm, drilled |
| KB0814 | 100-210-12 mm, drilled |

We produce also other type of brake discs according inquiry

9. WHEELS

Whells "MINI"
 CODE DESCRIPTION
 Mg set of wheels MINI /2 x Front -115mm and 2 x rear -143mm/

KD1243



Model MINI

Wheels Model "2009"
 KD1012 **Mg front wheel 130mm C125-"09"**, diam. 40/58mm
 KD1014 prepared for locking screws
 with locking screws and valve

KD1022 **Mg front wheel 130mm C125-"09"**, diam. 55/67mm type CRG
 KD1024 prepared for locking screws
 with locking screws and valve

KD1232 **Mg rear wheel 180mm C125-"09"**
 KD1234 prepared for locking screws
 with locking screws and valve

KD1032 **Mg rear wheel 210mm C125-"09"**
 KD1034 prepared for locking screws
 with locking screws and valve



Model 2009

Mg whells type KR /fitted to Kart republic/

KD1264 Mg front wheel 130 mm diam., model KR - with 3 x locking screws + valve

KD1294 Mg rear wheel 210 mm - model KR - with 3 x locking screws + valve

KD1264



KD1294



Wheels model "MXC"



KD1162
CODE

KD1192

DESCRIPTION

Mg front wheel 130 mm model MXC diam. 40-58

KD1162
KD1164

prepared for locking screws
with locking screws, with valve

Mg rear wheel 180 mm model MXC

KD1172
KD1174

prepared for locking screws
with locking screws, with valve

Mg rear wheel 210 mm -model MXC

KD1192
KD1194

prepared for locking screws
with locking screws, with valve



KD0986

Accessories for wheels

KD0983
KD0984
KD0985
KD0986
KD0987

O ring only
Bearing 6003 ZZ
Valve short
Al locking screw + rubber O ring - EVO
O ring only - EVO

We produce also another types regarding inquiry



Model 04



Model 12



Model US



Al wheels



10. REAR AXLES AND ACCESSORIES



KH1101

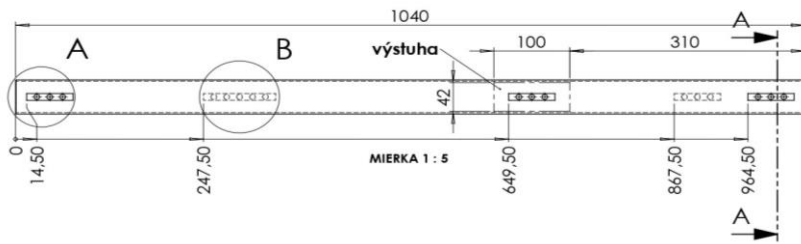


KH1121

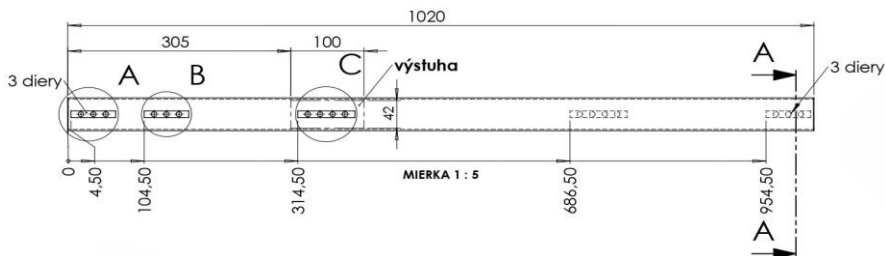


KH1122BK

| CODE | DESCRIPTION |
|------------|--|
| KH1101S | Rear Axle 30x6-950 mm, soft (5 keyways) |
| KH1101M | Rear Axle 30x5-950 mm, medium |
| KH1101H | Rear Axle 30x5-950 mm, hard |
| KH1112S | Rear axle 40 - DD2 - 1040 mm, soft |
| KH1112M | Rear axle 40 - DD2 - 1040 mm, medium |
| KH1122S | Rear axle 50x2-1040 mm, soft - universal |
| KH1122M | Rear axle 50x2-1040 mm, medium - universal |
| KH1122MH | Rear axle 50x2-1040 mm, medium - hard - universal |
| KH1122H | Rear axle 50x2-1040 mm, hard - universal |
| KH1122SBK | Rear axle 50x2-1040 mm, soft- universal - black |
| KH1122MBK | Rear axle 50x2-1040 mm, medium- universal -black |
| KH1122MHBK | Rear axle 50x2-1040 mm, medium- hard - uni. -black |
| KH1122HBK | Rear axle 50x2-1040 mm, hard- universal - black |



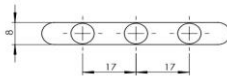
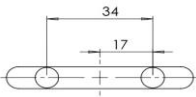
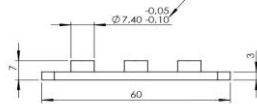
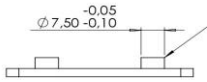
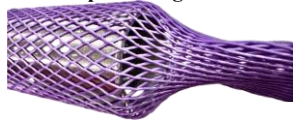
| | |
|------------|--|
| KH1121S | Rear axle 50x2-1020 mm, soft - universal |
| KH1121M | Rear axle 50x2-1020 mm, medium - universal |
| KH1121MH | Rear axle 50x2-1020 mm, medium - hard - universal |
| KH1121H | Rear axle 50x2-1020 mm, hard - universal |
| KH1121SBK | Rear axle 50x2-1020 mm, soft- universal - black |
| KH1121MBK | Rear axle 50x2-1020 mm, medium- universal -black |
| KH1121MHBK | Rear axle 50x2-1020 mm, medium- hard - uni. -black |
| KH1121HBK | Rear axle 50x2-1020 mm, hard- universal - black |



| CODE | DESCRIPTION |
|--------|--|
| KH1178 | CIK sticker and marking for ordered axles |
| KH1181 | Key 6x6x60 mm |
| KH1182 | Key 8x5x60 mm |
| KH1192 | Key 8x5x40 mm |
| KH1183 | Key 8x60mm with pegged (3x7,5 mm, int.17 mm) |
| KH1184 | Key 8x60mm with pegged (2x7,5 mm, int.34 mm) |
| KH1185 | Key 8x60mm with pegged (3x7,5 mm, int.15 mm) |
| KH1186 | Key 8x60mm with pegged (2x7,5 mm, int.30 mm) |
| KH1190 | Packing to axle protection |

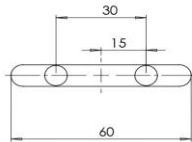
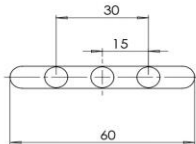
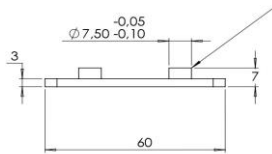
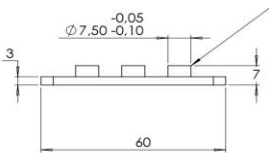
Axles we producing also according special request

KH1190



KH1184

KH1183



KH1185

KH1186

| CODE | DESCRIPTION |
|----------|--|
| KH1175 | Enduser for axle $\varnothing 30$ mm |
| KH1176 | Enduser for axle $\varnothing 40$ mm |
| KH1177 | Enduser for axle $\varnothing 50$ mm |
| KH1172BK | Axle cleaning tool for $\varnothing 30, \varnothing 40, \varnothing 50$ mm axles - black |



KH1177

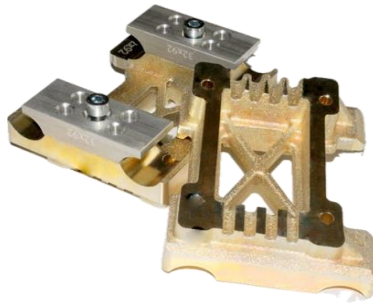


KH1172BK

11. ENGINE MOUNTS



KE1220

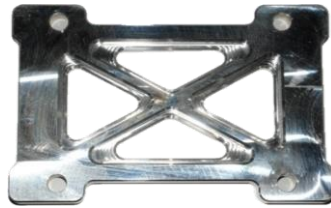


KE1220

| CODE | DESCRIPTION |
|------------|--|
| | Mg engine mount inclined for ROTAX engines |
| KE1219 | Mg engine mount 28x92- ROTAX - with brac. 102x80mm |
| KE1220 | Mg engine mount 30x90, with brackets (pitch 102 x 80) |
| KE1221 | Mg engine mount 30x92, with brackets (pitch 102 x 80) |
| KE1222 | Mg engine mount 32x90, with brackets (pitch 102 x 80) |
| KE1223 | Mg engine mount 32x92, with brackets (pitch 102 x 80) |
| KE1224 | Mg engine mount UNI, with brackets (pitch 102 x 80) |
| | Mg engine mount inclined for X30 engines |
| KE1220X30 | Mg engine mount 30x90, with brackets (pitch 115 x 80) |
| KE1221X30 | Mg engine mount 30x92, with brackets (pitch 115 x 80) |
| KE1222X30 | Mg engine mount 32x90, with brackets (pitch 115 x 80) |
| KE1223X30 | Mg engine mount 32x92, with brackets (pitch 115 x 80) |
| KE1224X30 | Mg engine mount UNI, with brackets (pitch 115 x 80) |
| | Mg engine mount inclined ROTAX and X30 - universal |
| KE1220UNI | Mg engine mount 30x90, w.b. (pitch 102x80 and 115x80) |
| KE1221UNI | Mg engine mount 30x92, w.b. (pitch 102x80 and 115x80) |
| KE1222UNI | Mg engine mount 32x90, w.b. (pitch 102x80 and 115x80) |
| KE1223UNI | Mg engine mount 32x92, w.b. (pitch 102x80 and 115x80) |
| KE1224UNI | Mg engine mount UNI, w.b. (pitch 102x80 and 115x80) |
| | Mg engine mount included for ROTAX engines without brackets |
| KE1219N | Mg engine mount 28x92 without brackets (pitch 102 x 80) |
| KE1220N | Mg engine mount 30x90, without brackets (pitch 102 x 80) |
| KE1221N | Mg engine mount 30x92, without brackets (pitch 102 x 80) |
| KE1222N | Mg engine mount 32x90, without brackets (pitch 102 x 80) |
| KE1223N | Mg engine mount 32x92, without brackets (pitch 102 x 80) |
| KE1224N | Mg engine mount UNI, without brackets (pitch 102 x 80) |
| | Mg engine mount inclined for X30 engines without brackets |
| KE1220X30N | Mg engine mount 30x90, without brackets (pitch 115 x 80) |
| KE1221X30N | Mg engine mount 30x92, without brackets (pitch 115 x 80) |
| KE1222X30N | Mg engine mount 32x90, without brackets (pitch 115 x 80) |
| KE1223X30N | Mg engine mount 32x92, without brackets (pitch 115 x 80) |
| KE1224X30N | Mg engine mount UNI, without brackets (pitch 115 x 80) |
| | Mg engine mount inclined for ROTAX and X30 - universal without brackets |
| KE1220UNIN | Mg engine mount 30x90, (pitch 102x80 and 115x80) |
| KE1221UNIN | Mg engine mount 30x92, (pitch 102x80 and 115x80) |
| KE1222UNIN | Mg engine mount 32x90, (pitch 102x80 and 115x80) |
| KE1223UNIN | Mg engine mount 32x92, (pitch 102x80 and 115x80) |
| KE1224UNIN | Mg engine mount UNI, (pitch 102x80 and 115x80) |



KE1217



KE1218

Engine plates

- KE1217 Mg ROTAX engine plate (pitch 102 x 80)
- KE1217X30 Mg X30 engine plate (pitch 115 x 80)
- KE1217UNI Mg UNI engine plate (pitch 102 x 80 and 115 x 80)
- KE1218 Al engine plate (pitch 102 x 80)
- KE1218X30 Al engine plate X30 (pitch 115 x 80)
- KE1218UNI Al engine plate UNI (pitch 102 x 80 and 115 x 80)



KE1230

Mg engine mount - flat

- KE1230 Mg engine mount 30x90, with brackets (pitch 115 x 80)
- KE1231 Mg engine mount 30x92, with brackets (pitch 115 x 80)
- KE1232 Mg engine mount 32x90, with brackets (pitch 115 x 80)
- KE1233 Mg engine mount 32x92, with brackets (pitch 115 x 80)
- KE1234 Mg engine mount UNI, with brackets (pitch 115 x 80)

Mg engine mount - flat without brackets

- KE1230N Mg engine mount 30x90, without brackets (pitch 115 x 80)
- KE1231N Mg engine mount 30x92, without brackets (pitch 115 x 80)
- KE1232N Mg engine mount 32x90, without brackets (pitch 115 x 80)
- KE1233N Mg engine mount 32x92, without brackets (pitch 115 x 80)
- KE1234N Mg engine mount UNI, without brackets (pitch 115 x 80)



KE1250BK



KE1251

Brackets

- KE1250 Standart bracket
- KE1251 Light bracket 28x90
- KE1252 Light bracket 28x92
- KE1253 Light bracket 30x90
- KE1254 Light bracket 30x92
- KE1255 Light bracket 32x90
- KE1256 Light bracket 32x92

**Colored bracket + 0,60.-EUR/pcs available colors:
black, blue, red, grey, gold, magnesium gold**

12. TIE RODS



KS1510

| CODE | DESCRIPTION |
|-------------|--|
| KS1510210BK | Al steering tie rods 210 mm - black |
| KS1510215BK | Al steering tie rods 215 mm - black |
| KS1510220BK | Al steering tie rods 220 mm - black |
| KS1510225BK | Al steering tie rods 225 mm - black |
| KS1510230BK | Al steering tie rods 230 mm - black |
| KS1510235BK | Al steering tie rods 235 mm - black |
| KS1510240BK | Al steering tie rods 240 mm - black |
| KS1510245BK | Al steering tie rods 245 mm - black |
| KS1510250BK | Al steering tie rods 250 mm - black |
| KS1510255BK | Al steering tie rods 255 mm - black |
| KS1510260BK | Al steering tie rods 260 mm - black |
| KS1510265BK | Al steering tie rods 265 mm - black |
| KS1510270BK | Al steering tie rods 270 mm - black |
| KS1510275BK | Al steering tie rods 275 mm - black |
| KS1510280BK | Al steering tie rods 280 mm - black |
| KS1510285BK | Al steering tie rods 285 mm - black |
| KS1510465BK | Al gear tie rods 465 mm - black |
| KS1510495BK | Al gear tie rods 495 mm - black |
| KS1510540BK | Al gear tie rods 540 mm - black |



KSOTK220GD

| | |
|------------|---|
| KSOTK220GD | Al steering tie rod 220mm-gold type OTK |
| KSOTK225GD | Al steering tie rod 225mm-gold type OTK |
| KSOTK230GD | Al steering tie rod 230mm-gold type OTK |
| KSOTK235GD | Al steering tie rod 235mm-gold type OTK |
| KSOTK265GD | Al steering tie rod 265mm-gold type OTK |
| KSOTK270GD | Al steering tie rod 270mm-gold type OTK |



KS1520(left) KS1524(left)
 KS1521(right) KS1525(right)

| | |
|--------|-----------------------------|
| KS1520 | Spherical joint left - ISB |
| KS1521 | Spherical joint right - ISB |
| KS1524 | Spherical Joint left - MGK |
| KS1525 | Spherical Joint right - MGK |

13. CHAIN STRETCHERS



KD1280



KE1285



KE1290, KE1291

| CODE | DESCRIPTION |
|----------|--|
| KE1280BK | Chain stretcher with bolt M12 - black |
| KE1285BK | Chain stretcher for KZ - black |
| KE1290 | Bolt M12 for chain stretcher l=60mm |
| KE1291 | Bolt M12 for chain stretcher l=85mm |

14. PEDALS



KP1401

| CODE | DESCRIPTION |
|----------|--|
| KP1401BK | Al set of pedals (accelerator+brake pedal) |
| KP1402BK | Al accelerator pedal - black |
| KP1403BK | Al brake pedal - black |



KP1411BK

| | |
|----------|---|
| KP1411BK | Al set of pedals MINI (accelerator+brake pedal) |
| KP1412BK | Al accelerator pedal MINI - black |
| KP1413BK | Al brake pedal MINI - black |
| KP1405 | Pedal backstop |



KP1405

| | |
|----------|-----------------------------------|
| KP1410BK | Al pedal extension - black |
|----------|-----------------------------------|



| | |
|----------|--|
| KD1450BK | KP1410BK Al feet support - black |
|----------|--|



KD1450

15. STEERING



KS1550BK



KS1555

KS1550BK Al hub for steering wheels – inclined - **black**
 KS1555 Mg hub for steering wheels – inclined



KS1580BK



KSOTK02GD

KS1580BK Al steering wheel support-positional 7°-14°-21° - black
 Universal for standard and OTK steering wheels
 KSOTK02GD Al inclined steering wheel support for OTK - gold

CODE DESCRIPTION

KS1560BK Al angled washer for steering wheels-universal for standard and OTK steering wheels

KS1501BK Steering columns support with bearing Ø20/Ø20 - black with fixation



KS1560BK



KS1501

CODE DESCRIPTION

KSOTK000 Excenter OTK CENTRAL
 KSOTK050 Excenter OTK 0,50° - 1
 KSOTK100 Excenter OTK 1,00° - 2
 KSOTK150 Excenter OTK 1,50° - 3
 KSOTK200 Excenter OTK 2,00° - 4
 KSOTK250 Excenter OTK 2,50° - 5
 KSOTK000M Excenter OTK 0,00 - 0 degree - complete - MINI
 KSOTK050M Excenter OTK 0,50 - 1 -complete- MINI
 KSOTK100M Excenter OTK 1,00 - 2 - complete- MINI
 KSOTK150M Excenter OTK 1,50 - 3 - complete-MINI
 KSOTK200M Excenter OTK 2,00 - 4 - complete- MINI
 KSOTK250M Excenter OTK 2,50 - 5 - complete- MINI
 KSOTK01 Excenter OTK cover with magnets



KSOTK



KZ0019L

CODE DESCRIPTION

KZ0019L Stubaxle 17mm - MINI - 10,5° - left
 KZ0019R Stubaxle 17mm - MINI - 10,5° - right



KZ0021L

KZ0021L Stubaxle OK 25mm - 10,5° - left
 KZ0021R Stubaxle OK 25mm - 10,5° - right

KZ0003L Stubaxle OK 25mm - 11degree - left
 KZ0003R Stubaxle OK 25mm - 11degree - right



KZ0020

KZ0020L Stubaxle 25/17mm - 10,5°-2015 - complete - left
 KZ0020R Stubaxle 25/17mm - 10,5°-2015 - complete - right
 KZ0016L Stubaxle KF+KZ diam. 25mm - 11°-2015 - complete - left
 KZ0016R Stubaxle KF+KZ diam 25mm - 11°-2015 - complete - right
 KZ0020L Stubaxle 25/17mm - 10,5°-2015 - complete - left
 KZ0020R Stubaxle 25/17mm - 10,5°-2015 - complete - right



FAC002

CODE DESCRIPTION

FAC002 Conical spacer Ø10x30x3mm /stub axle height/
 FAC003 Conical spacer Ø10x30x6mm /stub axle height/

KZ0037 Conical spacer Ø8x30x3mm /stub axle height/
 KZ0038 Conical spacer Ø8x30x6mm /stub axle height/



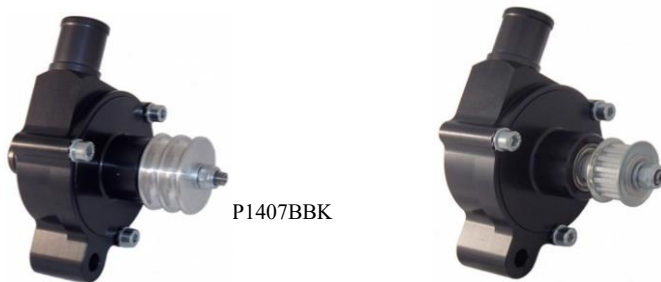
KZ001



KZ002

KZ0004 Stubaxle ring Ø17-5 mm
 KZ0005 Stubaxle ring Ø17-10 mm
 KZ0002 Stubaxle ring Ø25-5mm
 KZ0001 Stubaxle ring Ø25-10mm

16. WATERPUMP AND ACCESORIES



KP1407ABK

P1407BBK

| CODE | DESCRIPTION |
|-----------|---------------------------------------|
| KP1407ABK | Al waterpump type o-ring |
| KP1407BBK | Al waterpump type for belt with teeth |



KP1703BK+KP1407OR

| | |
|-------------|---|
| KP1407OR355 | Toothed belt 355mm |
| KP1407OR375 | Toothed belt 375mm |
| KO1703BK | Al pulleys for water pump for belt with teeth - black |



KO1701,KO1705

| | |
|----------|--|
| KO1701BK | Al pulleys for water pump 80 mm - black |
| KO1702BK | Al pulleys for water pump 90 mm - black |
| KO1705 | Mg pulleys for water pump 90 mm |
| KO1707 | Mg pulleys for water pump 80 mm |
| | Untill stocks are sold out |



KO1760,KO1761

| | |
|----------|---|
| KO1760BK | Al connection for water probe - black |
| KO1761BK | Al Connection for radiator pipe - 3 ways /T-type/ - black |

Laser marking technology
we can markt our products with your name our logo your company

17. NEW PRODUCTS



KD1601

KD1601 Al clamps Ø28 mm

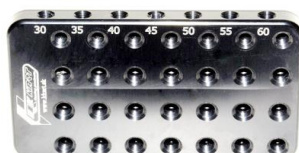
KD1602 Al clamps Ø30 mm

KD1603 Al clamps Ø32 mm



KO1720

KO1770BK



KO1720BK Al scale for gasoline level /step 0,25mm/- **black**

KO1770BK Al jet support with magnet - **black**



TORSION BAR CLAMP

KO1750



KO1750MG Clutch lever

KO1632 Torsion bar clamp Ø30mm



KO1740BK, KO1741BK, KO1746BK

KO1740BK Al countersunk washer Ø 6 mm black

KO1741BK Al countersunk washer Ø 8/Ø30 mm black

KO1746BK Al countersunk washer Ø 8/Ø22 mm black



LASER MARKING

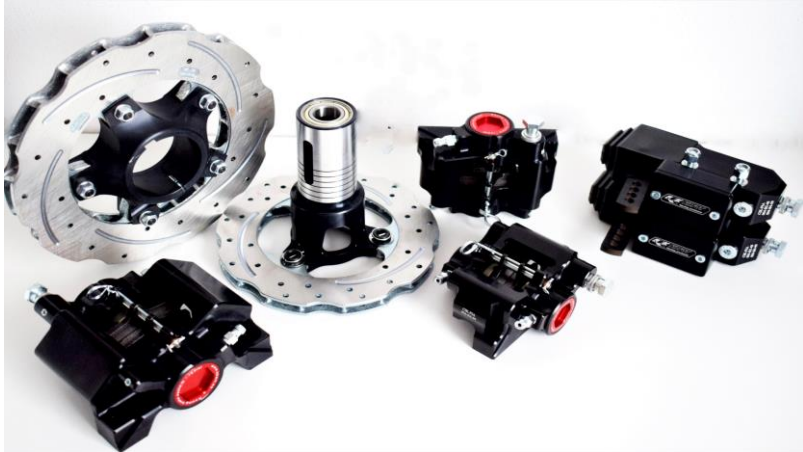
LASER0 Laser marking /logo,name, .../ 0 - 100 pieces

LASER1 Laser marking /logo,name, .../ 100 - more pieces

All prices are in EUR

Minimum order quantity is 10 pcs/item

**18. BRAKE SYSTEMS AND PRODUCTS FOR
INDIVIDUAL ORDERS**



**Homologated brake systems
for MINI, OK/OKJ and KZ/DD2 - complete**



SPECIAL HUBS



BEARING HOUSES



BRAKE DISCS INDIVIDUAL